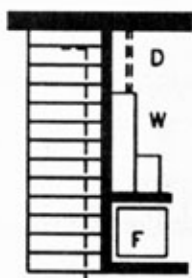


# MAGNOLIA HOMES

F, F & P  
MOBILE MODULAR TECHNOLOGIES INC.

**MODEL - FB - USQ5252\***  
 27'-8" X 52' W/ 27'-8" X 52'  
 THREE BEDROOMS • TWO BATHS  
 DOUBLE CAR GARAGE  
 2083 SQ.FT.

\*This floor plan only available in the Ultra Series.



OPTION STAIRWAY